

## Connecting Wii to high-speed Internet - Choosing a high-speed connection - With a wired Internet connection - Wii LAN Adapter

### Installing the Wii LAN Adapter

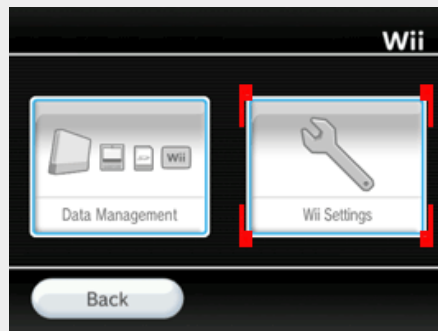
1. First make sure you have an Ethernet cable connected directly from your broadband modem or wired router. If you are using your modem\*, you will need to temporarily unplug the cable going to your computer when you wish to connect your Wii console online. Please note that you cannot connect the Wii LAN Adapter directly to a computer, in most cases.
2. With the power turned off on the Wii console, insert the Wii LAN Adapter into the USB port on the back of the Wii console.  
  
\*DSL users: while some DSL modems may be compatible, our experience has shown that many are not. We recommend using a router.
3. Connect an ethernet cord from your wired modem or broadband router to the ethernet port on the Wii LAN Adapter.
4. Turn on the Wii console and follow the steps below to configure the internet connection settings.

### Configuring the Internet Connection for the Wii LAN Adapter

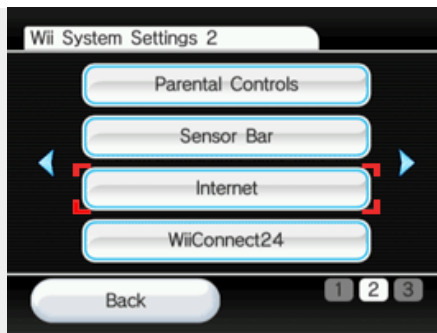
1. On the Wii console's main menu, click on the 'Wii button' in the lower left corner.



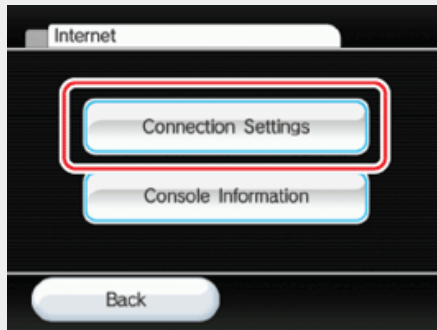
2. This will take you to the settings screen. On this screen, click on 'Wii Settings'.



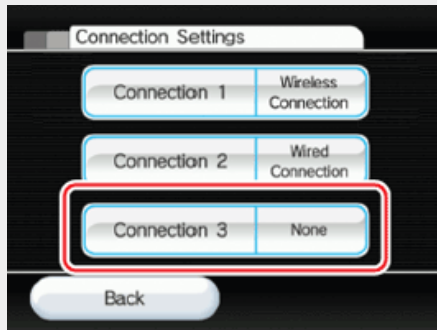
3. In the Wii System Settings, click on the blue arrow on the right to reach the second screen of options. On this screen, click the 'Internet' button.



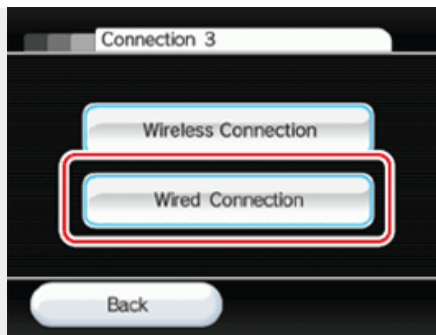
4. Select 'Connection Settings'.



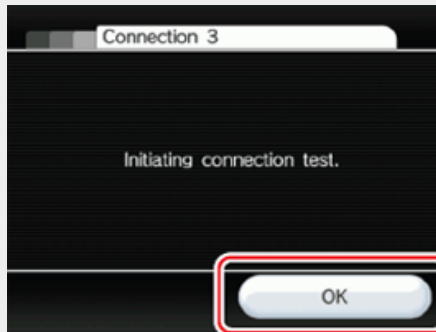
5. Select an empty connection slot indicated by 'None'.



6. Select 'Wired Connection'.



7. Click OK on the next screen. At this point your console will attempt to make a connection with your wired router.



If the **test succeeds**, you have completed Internet Setup and your Wii console is connected. For more information on other online features, [click here](#).

If the **test fails**, please [click here](#) for troubleshooting.

